

Create your own one of a Kind SASHING



Create a one of a kind Sash

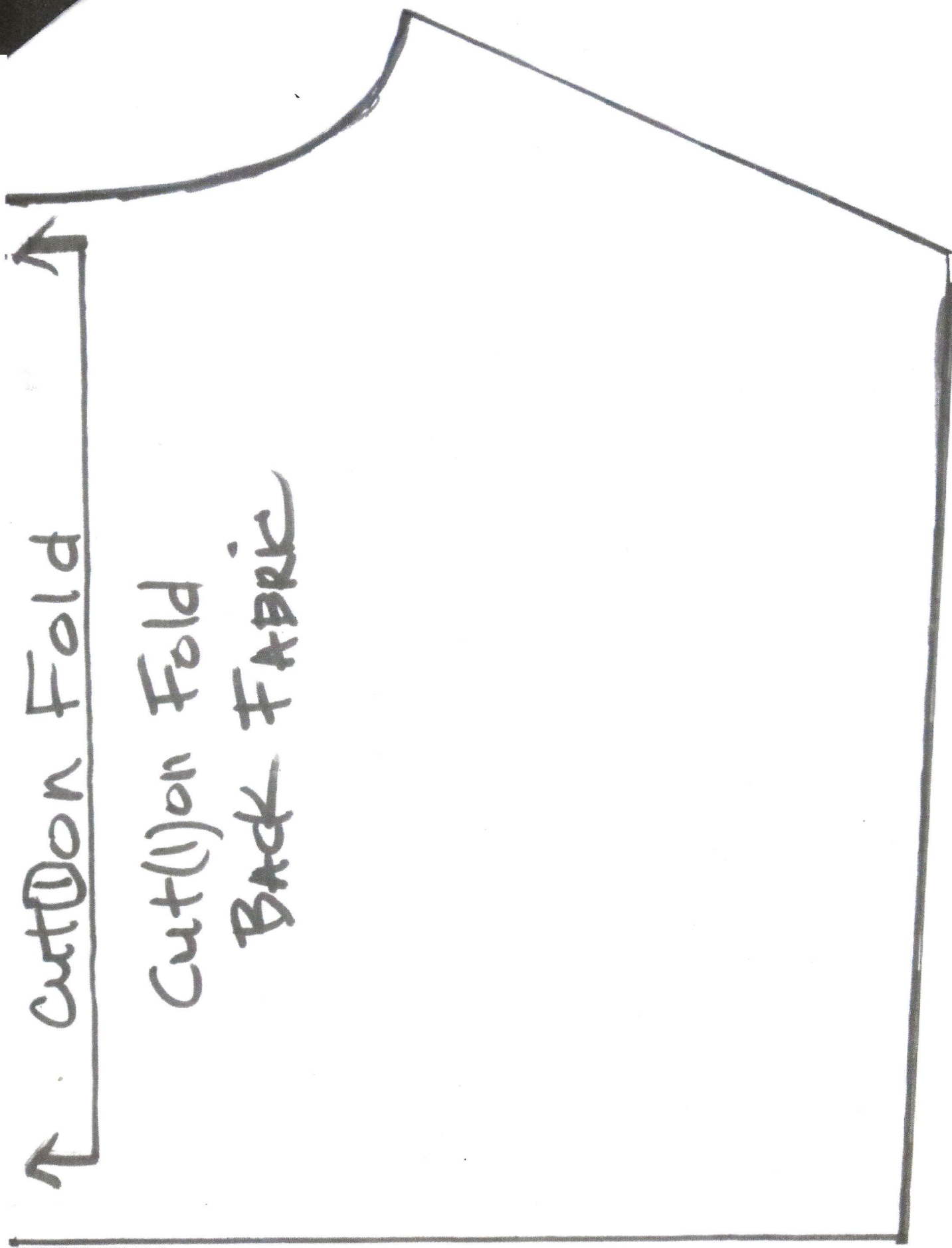
- * One size fit all. Pattern Provided.
- * Fabrics: I had a theme "Shades of Black Beauty", you can use all of your scraps. I cut mine 8" wide and a variety of length.
- * Cut the sashing 1" - 1 ¼" X 8 "wide, in black or desired color. I find that Black makes the other colors POP.
- * Join sashing to only one side of fabric, lay them in your desired order.
- * Length: I measured from my shoulder to my knee. (40")
- * This is a perfect time to add embroidery or any decorative designs or stitches.
- * After joining them all together, fold in half lengthwise and trim to clean the edges both sides.
- * Cut a lining or back fabric the same width and length as the fronts.
- * Lay right sides of fabrics together, with the back together, use the pattern provided cut out the shoulder and front neckline. Do the same for the backing fabrics.
- * Join right sides of front and back together at the shoulders, press seams open. Stitch @ ¼" seam allowance.
- * Do the same for the backs fabrics matching at the shoulders pin and stitch @ ¼" seam allowance. Leave an opening to pull right side out.
- * Designed by: Jacqueline Doctor Johnson
- * Press ENJOY

Cut(2) Fronts

Cut(2) Back FABRIC

↑ Cut Don Fold

Cut (1) on Fold
Back FABRIC



Cut fabrics and backing the same size



Cut shoulder & front edge with pattern together

Cut fabric front and backing together



Cut fabric back and backing together